

Images in clinical medicine



Ectopia lentis in Marfan syndrome

Narjisse Taouri, Nouridine Boutimzine

Corresponding author: Narjisse Taouri, Mohammed V University Souissi, Department A of Ophthalmology, Rabat, Morocco. ophthalmo-taouri@outlook.fr

Received: 16 May 2020 - **Accepted:** 18 May 2020 - **Published:** 18 May 2020

Keywords: Marfan syndrome, ectopic lentis, zonular abnormalities

Copyright: Narjisse Taouri et al. PAMJ Clinical Medicine (ISSN: 2707-2797). This is an Open Access article distributed under the terms of the Creative Commons Attribution International 4.0 License (<https://creativecommons.org/licenses/by/4.0/>), which permits unrestricted use, distribution, and reproduction in any medium, provided the original work is properly cited.

Cite this article: Narjisse Taouri et al. Ectopia lentis in Marfan syndrome. PAMJ Clinical Medicine. 2020;3(20). 10.11604/pamj-cm.2020.3.20.23575

Available online at: <https://www.clinical-medicine.panafrican-med-journal.com//content/article/3/20/full>

Ectopia lentis in Marfan syndrome

Narjisse Taouri^{1,&}, Nouridine Boutimzine¹

¹Mohammed V University Souissi, Department A of Ophthalmology, Rabat, Morocco

&Corresponding author

Narjisse Taouri, Mohammed V University Souissi, Department A of Ophthalmology, Rabat, Morocco

Image in medicine

We report the case of a 6-year-old-child, with history of mitral valve disease, he was diagnosed suffering from Marfan syndrome. He was brought to ophthalmological consultation for decreased visual acuity. The clinical examination found a visual acuity reduced to counting fingers at 1 meter in the right eye and 1/10 in the left eye. The examination after pupillary dilation revealed bilateral lens dislocation in the superonasal direction. While posterior segment examination was normal in both eyes. Considering the visual impact which cannot be improved by an optical correction, we decide to manage it surgically, which consisted in phacophagia for both eyes with interval of 2 months. For the aphakia, the patient

benefited from an optical correction by glasses and kept under observation to treat amblyopia. Ectopia lentis is an evolving disease, characterized by a crystalline lens displacement in the frontal plane, due to zonular abnormalities by

constitutional anomaly. It is usually bilateral, and symmetric. It may vary from partial to a complete displacement. In the case of our patient the ectopia lentis was a part of systemic diseases which is Marfan syndrome.

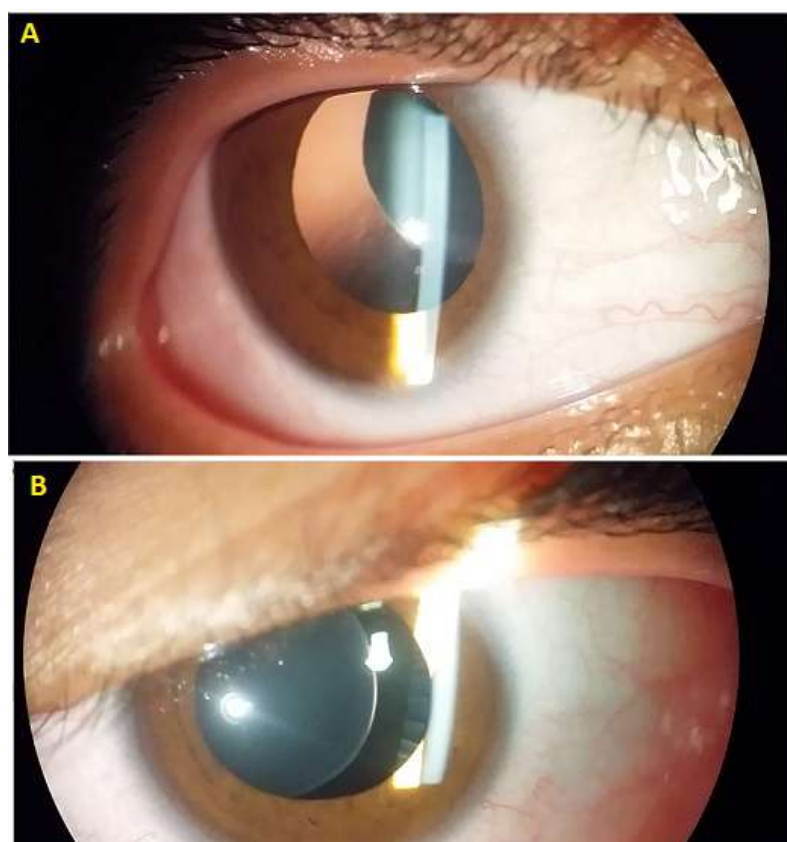


Figure 1: bilateral lens dislocation in the superonasal direction (A: right eye + B: left eye)