

Images in clinical medicine

A huge idiopathic pulmonary aneurysm: a stable follow up

Meryem El Ghanmi, Jamal Fatihi

Corresponding author: Meryem El Ghanmi, Cardiology Department, Mohamed V Military Hospital of Rabat, Rabat, Morocco. dr.meryem.elghanmi@gmail.com

Received: 25 May 2020 - **Accepted:** 29 May 2020 - **Published:** 10 Jun 2020

Keywords: Pulmonary artery, aneurysm, CT-scann

Copyright: Meryem El Ghanmi et al. PAMJ Clinical Medicine (ISSN: 2707-2797). This is an Open Access article distributed under the terms of the Creative Commons Attribution International 4.0 License (<https://creativecommons.org/licenses/by/4.0/>), which permits unrestricted use, distribution, and reproduction in any medium, provided the original work is properly cited.

Cite this article: Meryem El Ghanmi et al. A huge idiopathic pulmonary aneurysm: a stable follow up. PAMJ Clinical Medicine. 2020;3(49). 10.11604/pamj-cm.2020.3.49.23738

Available online at: <https://www.clinical-medicine.panafrican-med-journal.com//content/article/3/49/full>

A huge idiopathic pulmonary aneurysm: a stable follow up

Meryem El Ghanmi^{1,&}, Jamal Fatihi²

¹Cardiology Department , Mohamed V Military Hospital of Rabat, Rabat, Morocco, ²Internal Medicine Department, Mohamed V Military Hospital of Rabat, Rabat, Morocco

&Corresponding author

Meryem El Ghanmi, Cardiology Department, Mohamed V Military Hospital of Rabat, Rabat, Morocco

Image in medicine

A 60 years old woman, presented 5 years ago to the cardiology department addressed by her physician for atypical chest pain. She reported no history of palpitation or dyspnea. The cardiac auscultation revealed a 3/6 systolic murmur at the left lower sternal border. The chest radiography showed cardiomegaly with homogenous bilateral hilar opacities (A). The chest computed tomography (CT) angiography revealed a huge aneurysm of the main pulmonary artery sized 105 mm in transverse diameter (B,C,D) extending up to both left and right pulmonary arteries. It was diagnosed as idiopathic because the patient had no comorbidities that can cause a pulmonary artery (PA) aneurysm. We recommended surgery for the PA aneurysm, but

the patient refused surgery, she was discharged with medication and regular follow-up; her clinical condition stayed stable and the CT scan annually

controls didn't show any increase in the PA diameter.

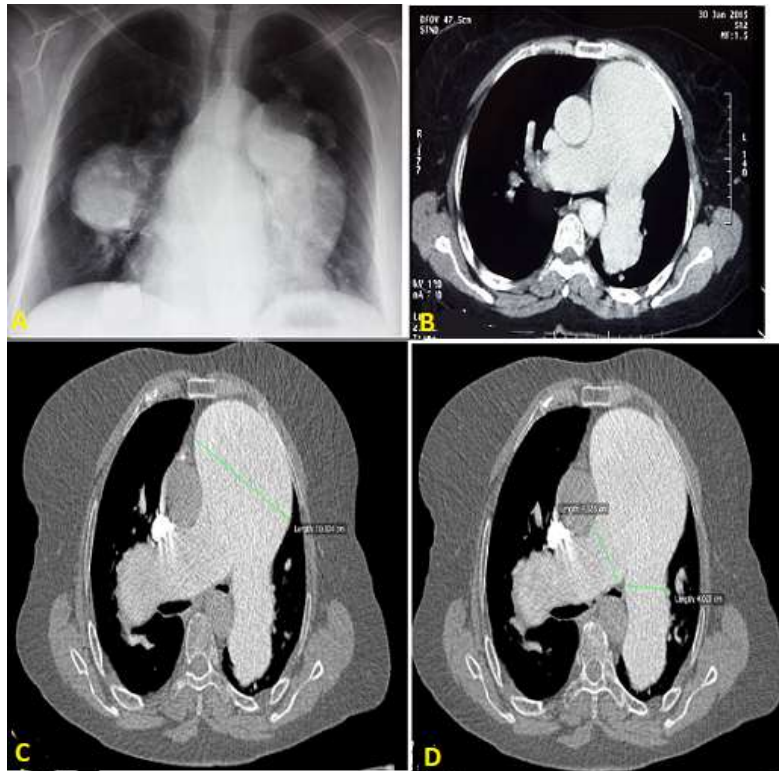


Figure 1: (A) chest radiography with a bilateral hilar opacities; (B,C,D) CT-scan showing the aneurysm of the main PA and its branches