

Images in clinical medicine



Post traumatic regressive cataract

 Karima Madbouhi,  Loubna El Kaissoumi

Corresponding author: Karima Madbouhi, Université Mohammed V Souissi, Ophtalmologie A, Hôpital des Spécialités, Centre Hospitalier Universitaire Rabat, Rabat, Morocco. karima.madbouhi@gmail.com

Received: 27 Jul 2021 - **Accepted:** 21 Sep 2021 - **Published:** 22 Oct 2021

Keywords: Cataract, posttraumatic, regressive

Copyright: Karima Madbouhi et al. PAMJ Clinical Medicine (ISSN: 2707-2797). This is an Open Access article distributed under the terms of the Creative Commons Attribution International 4.0 License (<https://creativecommons.org/licenses/by/4.0/>), which permits unrestricted use, distribution, and reproduction in any medium, provided the original work is properly cited.

Cite this article: Karima Madbouhi et al. Post traumatic regressive cataract. PAMJ Clinical Medicine. 2021;7(7). 10.11604/pamj-cm.2021.7.7.30958

Available online at: <https://www.clinical-medicine.panafrican-med-journal.com//content/article/7/7/full>

Post traumatic regressive cataract

Karima Madbouhi^{1,&}, Loubna El Kaissoumi¹

¹Université Mohammed V Souissi, Ophtalmologie A, Hôpital des Spécialités, Centre Hospitalier Universitaire Rabat, Rabat, Morocco

[&]Corresponding author

Karima Madbouhi, Université Mohammed V Souissi, Ophtalmologie A, Hôpital des Spécialités, Centre Hospitalier Universitaire Rabat, Rabat, Morocco

Image in medicine

A 60-year-old male who had a history of contusive trauma to the left eye 16 years ago, having presented for a cataract screening consultation. Examination of the left eye showed a corrected visual acuity of 20/200, eye tone was normal. Slit-lamp examination revealed a clear cornea, quiet anterior chamber with a good depth; lens was site of a regressive cataract with an intact capsular bag and persistence of cortex to the periphery after resorption of the nucleus. The patient underwent phacoaspiration with implantation of an intraocular lens (IOL) in the bag.

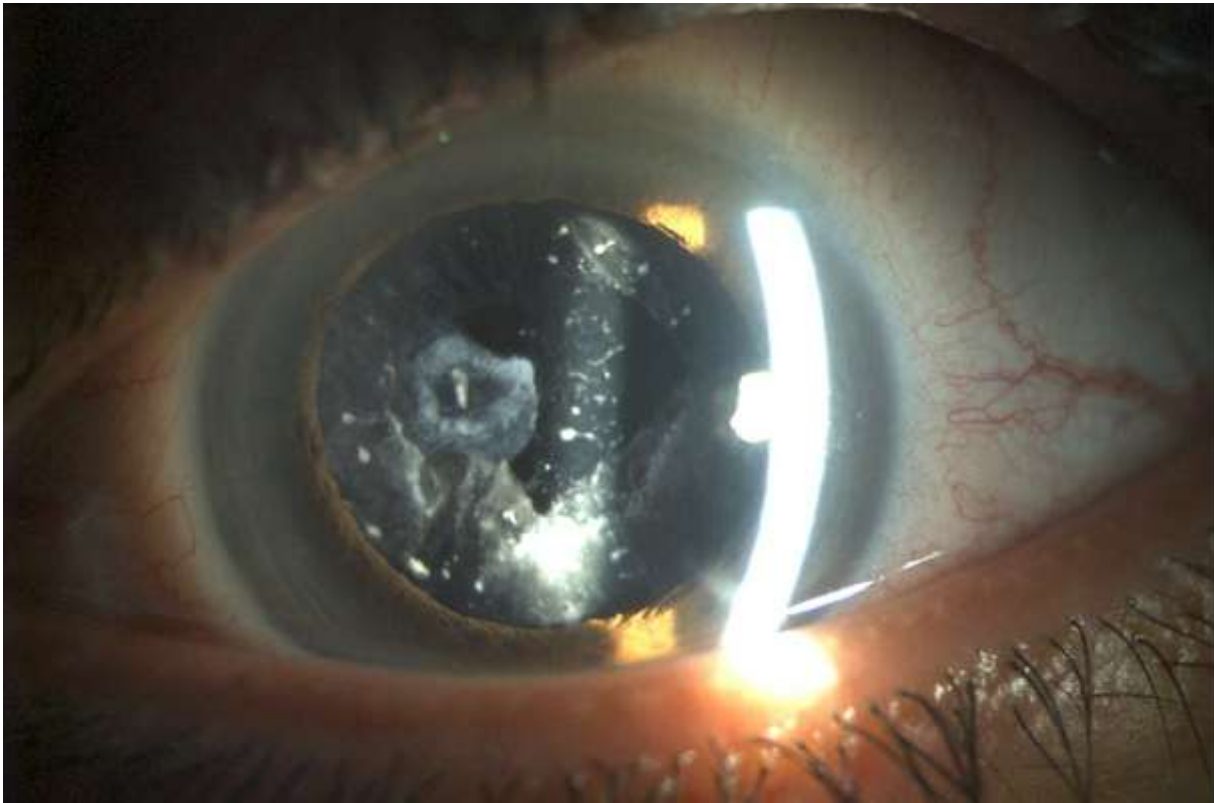


Figure 1: image of anterior segment showing a regressive cataract with an intact capsular bag and persistence of cortex to the periphery after resorption of the nucleus